



THE MODULAR DRINKING SYSTEM

Light & Sound
REMINDER BASE



Quick Start Guide



Index:

What Is Droplet®?	P3
The Droplet® Range	P4-5
The Reminder Base	P6-7
Initial Set Up	P8-9
Turning Droplet® On / Off	P10-11
Replace Battery Warning	P12-13
Increasing / Decreasing The Message Volume	P14-15
Increasing / Decreasing The Message Timer	P16-17
Increasing / Decreasing The Warning Light Timer	P18-19
Turning The Night Light System On / Off	P20-21
To Listen To The Reminder Messages	P22-23
To Record Reminder Messages	P24-27
To Return To Default Messages	P28-29
Cleaning	P30
Warnings	P31

What is Droplet®?

Droplet® is the modular hydration solution that encourages people to drink more. It has been developed to reduce people's risk of dehydration especially in hospitals, care homes and at home.

The heart of the system is a highly sophisticated reminder base that can talk to the user if they are not drinking enough, and warns the carer if the user has not drunk for some time.

The Droplet® Reminder Base can be easily attached to the bottom of the Droplet® Mug or Droplet® Tumbler.

The Droplet® Modular Drinking Product Range:



Droplet® Mug

A lightweight Tritan™ mug with a broad stable base. Its chunky open ended handle allows people with weak or swollen hands to easily grip the handle or the body of the mug with one or both hands. Features: discreet measuring lines at 100ml and 200ml for recording fluid levels and making thickened drinks; scratch and stain resistant; easily cleaned in a dishwasher.



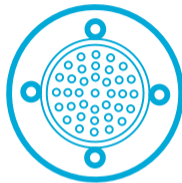
Droplet® Tumbler

A lightweight Tritan™ tumbler with a broad stable base. It has a blue tint which makes the drink look cool and fresh. Features: discreet measuring lines at 100ml and 200ml for recording fluid levels and making thickened drinks; scratch and stain resistant; easily cleaned in a dishwasher.



Droplet® Flow Control Lid

A transparent Tritan™ lid with a discreet recessed spout that controls the flow of liquids including stage 2 thickened drinks. It will easily clip on and off the Droplet® Mug or Droplet® Tumbler and has a hole for either a Pat Saunders straw or a regular straw. It provides dignified support for those who suffer from tremors or swallowing problems. It is scratch and stain resistant and is easily cleaned in a dishwasher.



Droplet® Light & Sound Reminder Base

The electronic reminder base is ideal for people who need to be prompted to drink. It is easily attachable to either the Droplet® Mug or Droplet® Tumbler. It features 3 systems: reminder messages; warning lights; night light.

The Droplet® Reminder Base:

The Reminder Base contains 3 systems

1. Reminder Messages

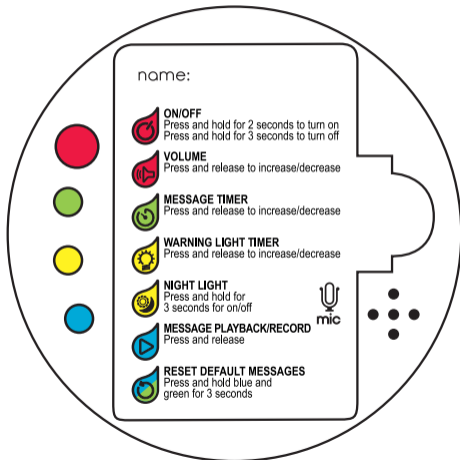
- The base has 3 pre-set messages designed to encourage the user to drink. They can be replaced with up to 3 personalised messages which you can record yourself. If the user does not drink during the chosen time of either 20, 40 or 60 minutes they will be reminded to drink by one of the 3 messages which play in rotation. If the user has been drinking the messages will not play. This feature can be switched off.

2. Warning Lights

- The base contains a series of 8 blue lights. If the user does not drink within the chosen time of either 20, 40 or 60 minutes the base will flash to remind the user to drink and alert the carer. If the user has been drinking the lights will not flash. This feature can be switched off.

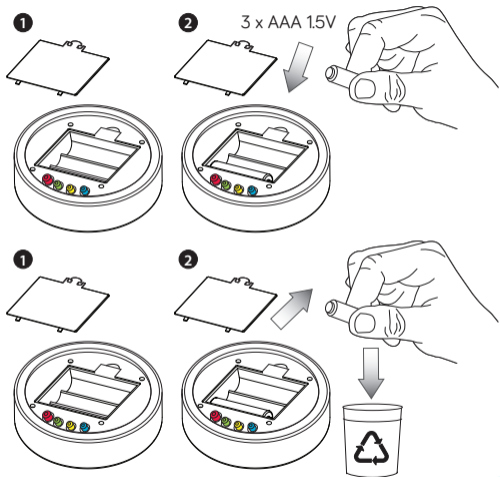
3. Night Light

- When the base senses darkness for more than 30 seconds it will automatically switch into night mode. Red lights in the base will glow to help the user find their cup at night. Both the reminder messages and warning lights will switch off when in night mode and will be re-activated only when darkness ends for more than 30 seconds.



Initial Set Up:

- The base requires 3 x AAA 1.5V batteries (not supplied). Simply open the battery compartment, insert the 3 x AAA 1.5V batteries in the correct polarity and close the compartment.
Note: Rechargeable batteries are not suitable.
- Droplet® is very simple to use. Once Droplet® is turned on it will talk you through the current settings. If you want to alter any of the settings first press the relevant function button and it will talk you through the process, step by step.
 - The message volume (Page 15)
 - The message timer interval (Page 17)
 - The warning light timer interval (Page 19)
 - The night light system (Page 21)
 - To record your own message (P25)





Turning Droplet® On:

- To turn Droplet® On, press and hold the **RED BUTTON** for 2 seconds.
- You will hear a message stating “Droplet® On,” and the current pre-set default settings for:
 - the message volume
 - the message timer
 - the warning light
 - the night light
- All chosen settings including the night light setting will be stored in Droplet’s® memory.
- 2 red lights in the base will flash slowly to indicate ‘power on’.

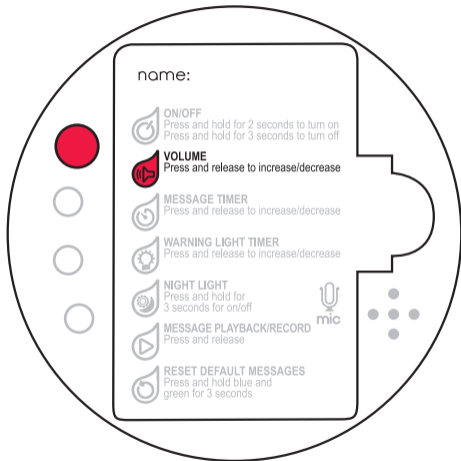
Turning Droplet® Off:

- To turn Droplet® Off, press and hold the **RED BUTTON** for 3 seconds.
- You will hear a message stating “Droplet® Off” and the red lights in the base will disappear.





Replace Battery Warning:

- Droplet® will indicate that the batteries need to be replaced when either:
 - the blue lights in the base start pulsing slowly during use.
- or
- Droplet® states *"Batteries low, please replace batteries"* when you switch Droplet® on.
- Droplet® will not work properly until the batteries have been replaced.



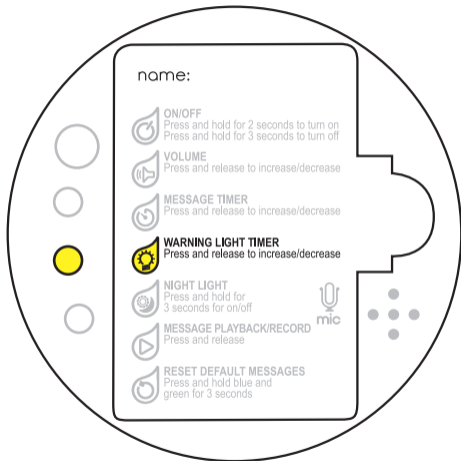
Increasing /Decreasing The Message Volume:

- The message volume can be set to 4 different volume levels (1 minimum - 4 maximum).
- To check the current volume level, press and release the  **RED BUTTON**. Droplet® will state the current level.
- To change the volume level, press and release the  **RED BUTTON** again and it will change to the next volume level.
- Repeat this until you have reached your desired volume level. (1, 2, 3, 4).



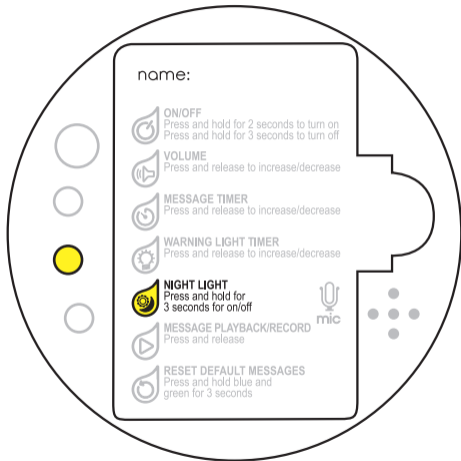
Increasing /Decreasing The Message Timer:

- The reminder messages can be set to play every 20, 40 or 60 minutes if the cup has not been drunk from. The reminder messages can also be turned off.
- To check the current message timer setting, press and release the **GREEN BUTTON**. Droplet® will state the current setting.
- To change the message timer setting, press and release the **GREEN BUTTON** again and it will take you to the next setting.
- Repeat this until you have reached your desired setting. (20, 40, 60, OFF).



Increasing /Decreasing The Warning Light Timer:

- The warning light can be set to repeat every 20, 40 or 60 minutes if the cup has not been drunk from. The warning light can also be turned off.
- To check the current warning light timer setting, press and release the **YELLOW BUTTON**. Droplet® will state the current setting.
- To change the warning light timer setting, press and release the **YELLOW BUTTON** again and it will take you to the next setting.
- Repeat this until you have reached your desired setting. (20, 40, 60, OFF).



Turning The Night Light System On/Off:

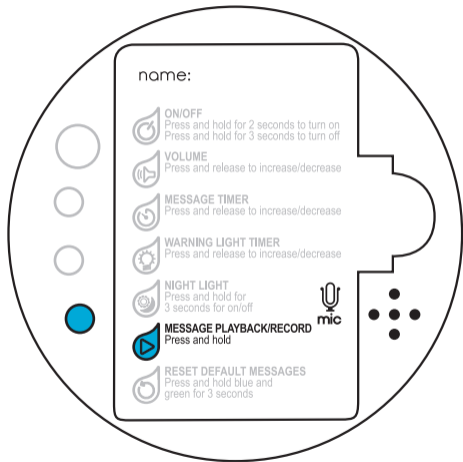
- The night light system works when the base senses that the room has been in darkness for more than 30 seconds.
- It will automatically turn off the message and warning light systems and switch on red lights that glow in the base so Droplet® can be found in the dark.
- To turn this system off press and hold the **YELLOW BUTTON** for 3 seconds. Droplet® will state *"Night light system off."*
- Please note, that if the night light system has been turned off the message and warning light systems will continue to operate throughout the night unless one or both of them have been turned off.
- To turn the system on again, press and hold the **YELLOW BUTTON** for 3 seconds.



To Listen To The Reminder Messages:



- There are 3 pre-set reminder messages.
 1. *"Every little sip helps. The more you drink the better you'll feel. Please take a sip now."*
 2. *"You must be thirsty. Why don't you have a drink now? It will do you good."*
 3. *"It's been too long since your last drink. Please pick up your cup and have a drink now. It's really good for you."*
- To listen to the reminder messages, press and release the **●BLUE BUTTON**.
- Droplet® will play the current message, then it will ask you if you want to keep the message or record a new one.
- To keep the message and move to the next, press and release the **●BLUE BUTTON**.
- Droplet® will play the next message, then it will give you the same options to keep the message or record a new one.



To Record Reminder Messages:

- To record your own message, press and release the **BLUE BUTTON**. The system will play you a message, then it will ask you if you want to keep the message or record a new one.
- To record a new message press and hold the **BLUE BUTTON**. As soon as you hear a 'Beep' keep pressing the **BLUE BUTTON** and you can start recording your own message by speaking clearly into the mic located in the base next to the battery hatch. Each message can be a maximum of 15 seconds.
- Once you have finished recording, release the **BLUE BUTTON** and it will play back your personalised message and give you the option to keep your personalised message or re-record it.
- If you decide to keep the message, press and release the **BLUE BUTTON** again, it will move to the next message.
- Should you wish to re-record your message press and hold the **BLUE BUTTON** and repeat the process above.
- To delete all recorded messages, see page 29.



Personalised Message Suggestions:

- Each personalised message can be up to 15 seconds in length. To help you, here are some suggestions. They have been created to allow you to insert the users name in a motivating and encouraging message.
- o “<INSERT NAME> It’s been a while since your last drink. Let’s have some fluids now.”
- o “<INSERT NAME> You might not feel thirsty but it’s important to drink regularly to keep you healthy. Let’s take a drink from your cup now.”
- o “<INSERT NAME> Let’s aim for 6-8 glasses of fluid today. That means taking regular drinks from your cup.”
- o “Every sip counts <INSERT NAME>! Try drinking little and often to make yourself feel good.”
- o “Every little sip does you good, have a drink now <INSERT NAME>. The more you drink, the better you’ll feel.”



To Return To Default Messages:

- You can only delete your recorded messages and return to default messages once you have gone through the **'To Listen To The Reminder Messages'** process on page 23. At the end of the playback of all messages Droplet® will state *"All messages recorded. To delete all messages and return to default messages press blue and green buttons together for three seconds."*
- Now press the **●BLUE BUTTON** and **●GREEN BUTTON** together for three seconds. Droplet® will state *"User recorded messages deleted, default messages on."*
- You can cycle quickly through all messages without having to listen to them individually by pressing the **●BLUE BUTTON** 4 times to reach the message *"All messages recorded. To delete all messages and return to default messages press blue and green buttons together for three seconds."*
- Note: All recorded messages will be deleted at the same time. They cannot be deleted individually.

Cleaning The Droplet® Light & Sound Reminder Base:

- Because this base contains electrical components, DO NOT put in water or in a dishwasher.
- Gently clean by using a soft damp cloth or anti-bacterial wipe.
- If by mistake the base is left attached to either the mug or tumbler and put into the dishwasher, it will start flashing. This will remind you to remove the base before washing.

Warnings!

Please retain all information for future reference.

The LEDs in the product cannot be replaced, when an LED reaches end of life, the entire product must be replaced.

WARNING! Not suitable for children under 36 months. Small parts could be a choking hazard. The Droplet® base is NOT suitable for use in the microwave.

Guidelines for use of batteries and battery operated items.

To avoid leakage, remove batteries when exhausted or if the product will not be used for a long period of time. Never short circuit the supply terminals. Never mix new and old batteries. Batteries must be inserted with the correct polarity. Do not mix batteries of different types. EG. zinc carbon batteries with alkaline batteries. Rechargeable batteries are not suitable.

IMPORTANT Please respect the environment by disposing of used batteries responsibly using Local Authority Facilities. Do NOT store exhausted batteries - dispose of immediately.



PATENT PENDING

Made in China for Spearmark International PE19 8GA, UK



Tritan™ is a trademark of Eastman Chemical Company.

